



HDMI 2.1 Type A to D Detachable Active Optical Cable

HDMI 2.1, TMDS signal, 100m transmission distance, no signal attenuation, anti-EMI



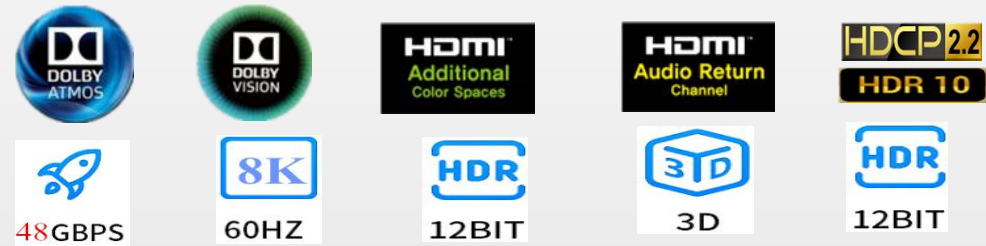
48Gbps | HDCP2.2 | 3D | 8K@60Hz | eARC

Name	HDMI 2.0 Type A to D Detachable Active Optical Cable
Model No.	GQ-19-320
Resolution	8K@60Hz 4K@120Hz
Bandwidth	48Gbps
Chip	Imported photoelectric conversion chip
Color space	4:4:4 Max
Color depth	12 bit Max
Type	Type A - D Detachable
Core	4-core fiber + 7-core tinned copper
Outer diameter	5.2mm
Shell	Zinc alloy
Jacket	PVC, RoHS Directive-compliant
Power supply	No external power supply required, plug and play
Support	HDCP 2.2/HDR10/EDID/CEC/DDC/eARC/3D
Power consumption.	250mW
Advantage	A and D connector can be Detachable(one cable two purposes)
Working temperature	-40°C~70°C

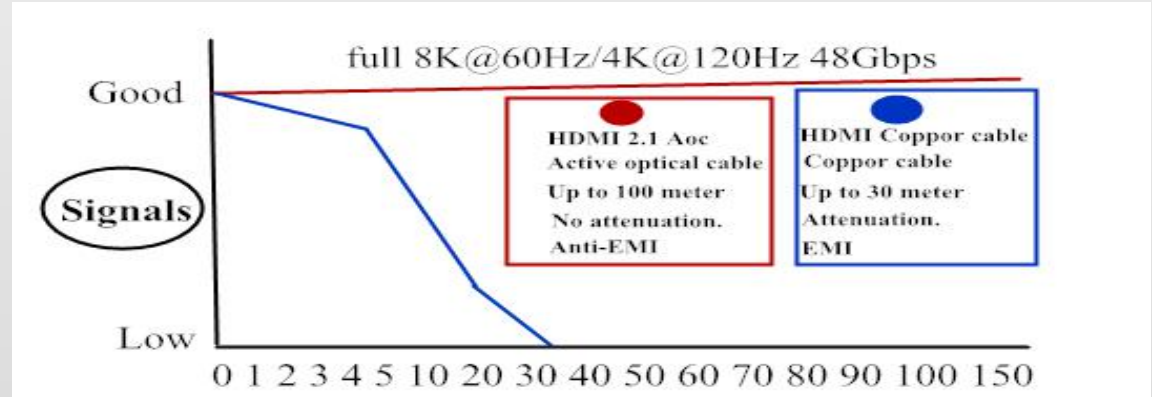
FEATURE

- 1, Compatible with all HDMI Standard devices.
- 2, Compliant with HDMI 2.1 version specification.
- 3, Four-core optical fiber transmits DP signals, Seven--core tinned copper transmits signaling protocol. Anti-electromagnetic interference, No attenuation.
- 4, Support long transmission distance, the longest over 100 meters.
- 5, Photoelectric conversion chip to improve compatibility, stability and service life.
- 6, Plug and play, no need external power support, no drivers program required
- 7, Zinc alloy shell Anti-electromagnetic interference increase wear resistance and improve service life. Detachable self-locking connectors.
- 8, Ideal for installation through conduit and other tight spaces.

SUPPORT



DETAILS



APPLICATION

Detachable design

Suitable for pipe wiring
HDMI and Micro HDMI
One cable Two purposes



Our HDMI AOC Other copper

- 1, Large screen display multimedia display control system.
- 2, Remote flat-panel TV.
- 3, Medical image display.
- 4, large outdoor advertising screens.
- 5, Public security HD camera.
- 6, High-definition long-distance video conferencing.
- 7, Large poster. Home theater.
- 8, High-defintion digital bulletin board.
- 9, Family, school, monitoring, security.
- 10, Aviation aircraft video imaging system.
- 11, Splicing screen video display.

Micro HDMI to HDMI interface

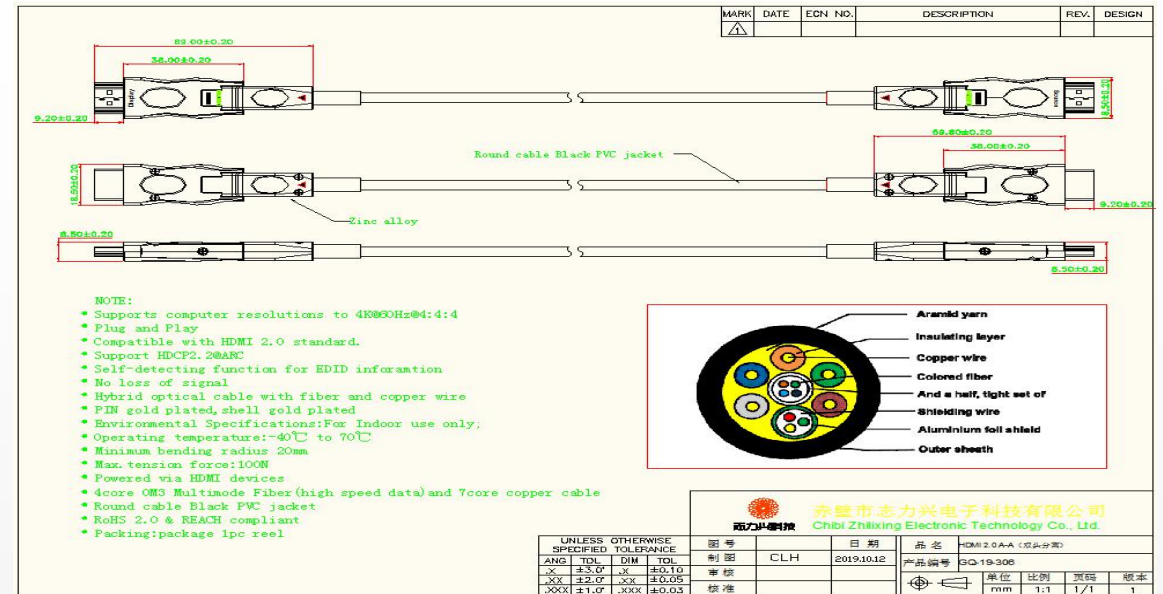
The Micro HDMI interface of SLR cameras and video cameras
To connect the HDTV and Display



CUSTOM SERVICES

Length	10~100 meter
Zinc Alloy Shell's color	Black/Silver/ Others
Rubber core's color	Black/Blue
Jacket	PVC/Braiding/Steel/CL3
Logo	Customizable for free
Packing	Customizable
Connector	Type A/Mini/Micro
Type	Male/Female

ENGINEERING DRAWING



PACKING

Length (meter)	Weight (kg)	Packaging	Packing size (cm)	Each box number (piece/box)	Each box weight (box/kg)
10m	0.34	Velcro tape+OPP bag	39×33×26	30	10.7
20m	0.59	Velcro tape+OPP bag	39×33×26	25	12.5
30m	0.80	reel+box	46×22×41	10	11.9
40m	1.06	reel+box	46×22×41	10	14.5
50m	1.32	reel+box	46×22×41	10	17
60m	1.57	reel+box	45×22×30.5	4	8.4
70m	1.83	reel+box	45×22×30.5	4	9.8
100m	2.59	reel+box	45×22×30.5	4	13.5

CONTACT

Mr.Ryan Lei
Tel/Whatsapp/Wechat:+86 13997531005

Email: ryan@cbzlx.com
Website: www.cbzlx.com